



SAF's history begins in 1881 in a village forge in Germany with the invention of a new plough. The family business soon starts building steel axles for agricultural vehicles, and under the name Otto Sauer Achsenfabrik (SAF) develops into one of the leading manufacturers of trailer axles and suspension systems in Europe.

A safety coupling between plough and horse team can be found at the beginning of Holland's history. The Safety Release Clevis Company was founded in South Dakota, USA, in 1910. After its move to Holland, Michigan, the company emerges as one of the largest supplier companies to the commercial vehicles industry under the name The Holland Hitch Company.

The merger of the two companies to form SAF-HOLLAND in 2006 creates one of the leading global suppliers of high-quality components and services for the commercial vehicle industry. Alongside axle and suspension systems for trailers and semi-trailers, the product range also includes kingpins and landing gear as well as fifth wheels for tractors, air suspensions, coupling products and numerous other components for buses and trucks.

In 2008, SAF-HOLLAND takes over Georg Fischer Verkehrstechnik, a leading supplier to the commercial vehicle industry, expanding its product range with GF fifth wheels and kingpins as well as the TRILEX wheel system and accessories for tractors, semitrailers and trailers.

Today the SAF-HOLLAND group is represented on all continents and distributes its products and services worldwide under the brand names SAF and HOLLAND as well as GF, TRILEX and NEWAY. It possesses its own distribution network with global service and dealer locations.



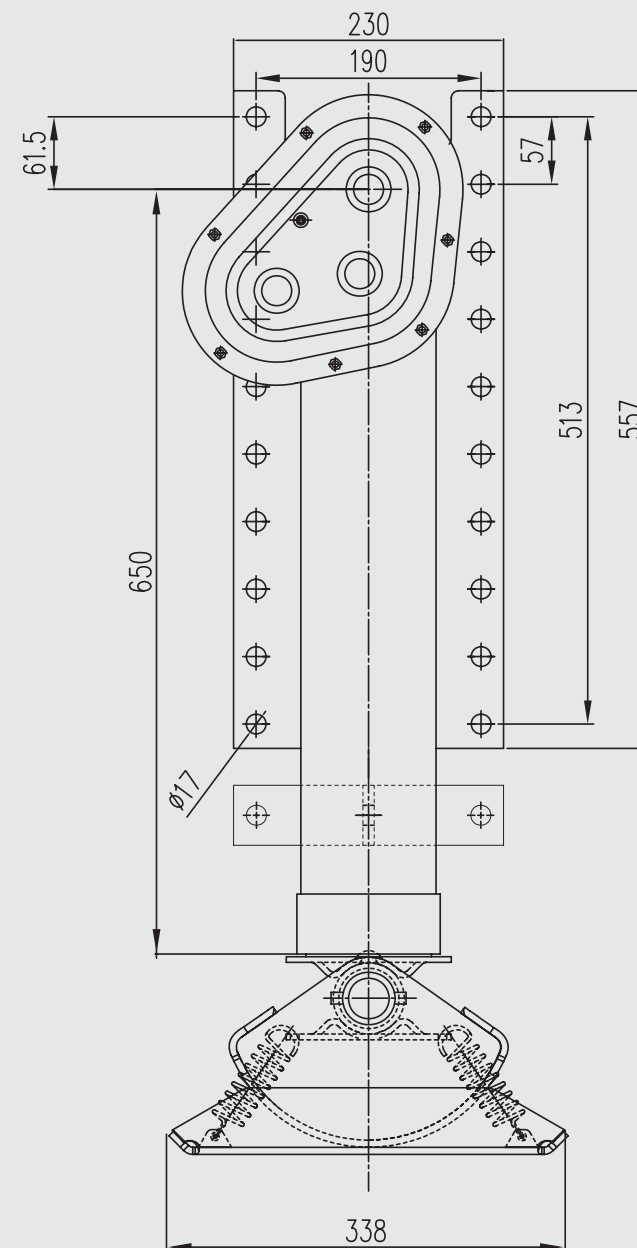
From fifth wheel rebuild kits to suspension bushing repair kits, SAF-HOLLAND Original Parts are the same quality components used in the original component assembly.

SAF-HOLLAND Original Parts are tested and designed to provide maximum performance and durability. Will-fits, look-alikes or worse yet counterfeit parts will only limit the performance potential and could possibly void SAF-HOLLAND's warranty.

Always be sure to spec SAF-HOLLAND Original Parts when servicing your SAF-HOLLAND product.

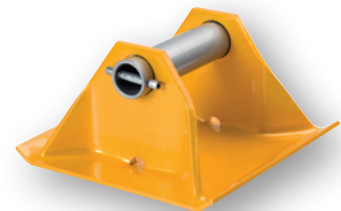
SAF BIGFOOT CLASSIC

P11.634GB - 0709 - Amendments and errors reserved - © SAF-HOLLAND GmbH



BIGFOOT CLASSIC TRAILER SUPPORT SYSTEM

72,000 kg Static Load
23,000 kg Lifting Capacity



Sand Shoe



Wheel

Compensating Foot

Part No. *	Total Height Extended A	Mounting Height B	Travel C	Location of Brace-Ear
3 427 0203 00	1107	748	359	N/A
3 427 0179 00	1247	818	429	530
3 427 0206 00	1361	875	486	580

***Please note:**

Set = pair of right and left landing legs.
The cross drive shaft, speed crank (SC), and crank holder are not included and have to be ordered separately.
Different foot types, cranks and crank shaft are available on request.

Sand Shoe

Part No. *	Total Height Extended A	Mounting Height B	Travel C	Location of Brace-Ear
3 427 0209 00	1152	762	390	N/A
3 427 0182 00	1229	800	729	530
3 427 0202 00	1343	857	486	580

***Please note:**

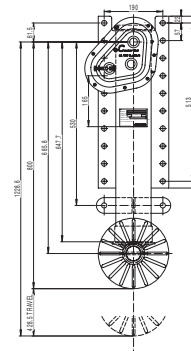
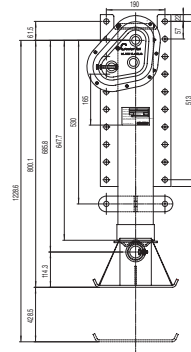
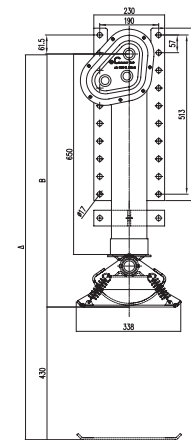
Set = pair of right and left landing legs.
The cross drive shaft, speed crank (SC), and crank holder are not included and have to be ordered separately.
Different foot types, cranks and crank shaft are available on request.

Wheel

Part No. *	Total Height Extended A	Mounting Height B	Travel C	Location of Brace-Ear
3 427 0214 00	1152	762	390	N/A
3 427 0191 00	1229	800	429	530
3 427 0217 00	1343	857	486	580

***Please note:**

Set = pair of right and left landing legs.
The cross drive shaft, speed crank (SC), and crank holder are not included and have to be ordered separately.
Different foot types, cranks and crank shaft are available on request.



PARTS OVERVIEW

Compensating Foot

Description	Mounting Height 748 mm	Mounting Height 818 mm	Mounting Height 875 mm
Set	3 427 0203 00	3 427 0179 00	3 427 0206 00
Leg gearside	3 427 0204 00	3 427 0180 00	3 427 0207 00
Leg w/o gear	3 427 0205 00	3 427 0181 00	3 427 0208 00
Master leg without foot	4 434 2205 00	4 434 2201 00	4 434 2207 00
Slave leg without foot	4 434 2206 00	4 434 2202 00	4 434 2208 00

Further heights on request

Sand Shoe

Description	Mounting Height 762 mm	Mounting Height 800 mm	Mounting Height 857 mm
Set	3 427 0209 00	3 427 0182 00	3 427 0202 00
Leg gearside	3 427 0210 00	3 427 0183 00	3 427 0212 00
Leg w/o gear	3 427 0211 00	3 427 0184 00	3 427 0213 00
Master leg without foot	4 434 2209 00	4 434 2203 00	4 434 2211 00
Slave leg without foot	4 434 2210 00	4 434 2204 00	4 434 2212 00

Further heights on request

Wheel

Description	Mounting Height 762 mm	Mounting Height 800 mm	Mounting Height 857 mm
Set	3 427 0214 00	3 427 0191 00	3 427 0217 00
Leg gearside	3 427 0215 00	3 427 0192 00	3 427 0218 00
Leg w/o gear	3 427 0216 00	3 427 0193 00	3 427 0219 00
Master leg without foot	4 434 2209 00	4 434 2203 00	4 434 2211 00
Slave leg without foot	4 434 2210 00	4 434 2204 00	4 434 2212 00

Further heights on request

Spare Parts

Description	Compensating Foot	Sand Shoe	Wheel
Spare part kit including foot mounting parts and accessories	3 434 2001 00	3 434 2002 00	3 434 2004 00
Crank 500 mm	3 427 0195 00	3 427 0195 00	3 427 0195 00
Crank 350 mm	3 427 0194 00	3 427 0194 00	3 427 0194 00
Crank holder – short	3 427 0198 00	3 427 0198 00	3 427 0198 00
Crank holder – long	XA-60024	XA-60024	XA-60024
Cross drive shaft 1500 mm	XA-E-1910	XA-E-1910	XA-E-1910
Cross drive shaft 1800 mm	XA-E-1910-1800	XA-E-1910-1800	XA-E-1910-1800



· TÜV and European Road Traffic Registration Regulations.

· The Landing Gear should always be operated in accordance with the instructions for the semi-trailer.

Do you want more technical informations?

Please contact the SAF-HOLLAND Aftermarket Business Unit directly.